

## Audi TT

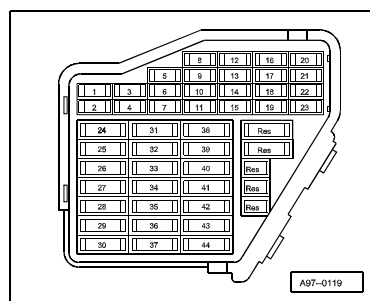
## Current Flow Diagram

No. 2/1

## 1.8 litre fuel injection engine, 155 kW, Motronic, 4-cylinder, engine code AJQ

from model year 1999

Fuse box

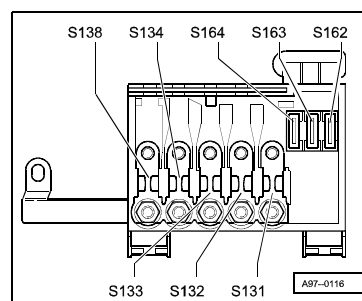


## Fuse colours:

- 30 A - green
- 25 A - white
- 20 A - yellow
- 15 A - blue
- 10 A - red
- 7.5 A - brown
- 5 A - beige

From fuse number 23 upwards the fuses in the fuse box are designated as 223 etc. in the Current Flow Diagram.

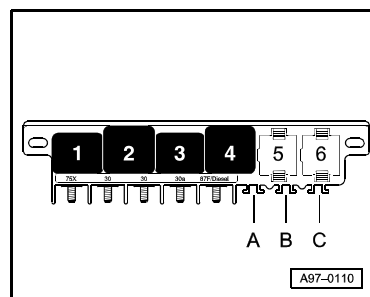
Main fuse box/battery



## Position of fuses:

- S131 - Fuse 1
- S132 - Fuse 2
- S133 - Fuse 3
- S134 - Fuse 4
- S138 - Fuse 5
- S162 - 1 in fuse in fuse box/battery
- S163 - 2 fuse in fuse box/battery
- S164 - 3 fuse in fuse box/battery

Micro-central electrics



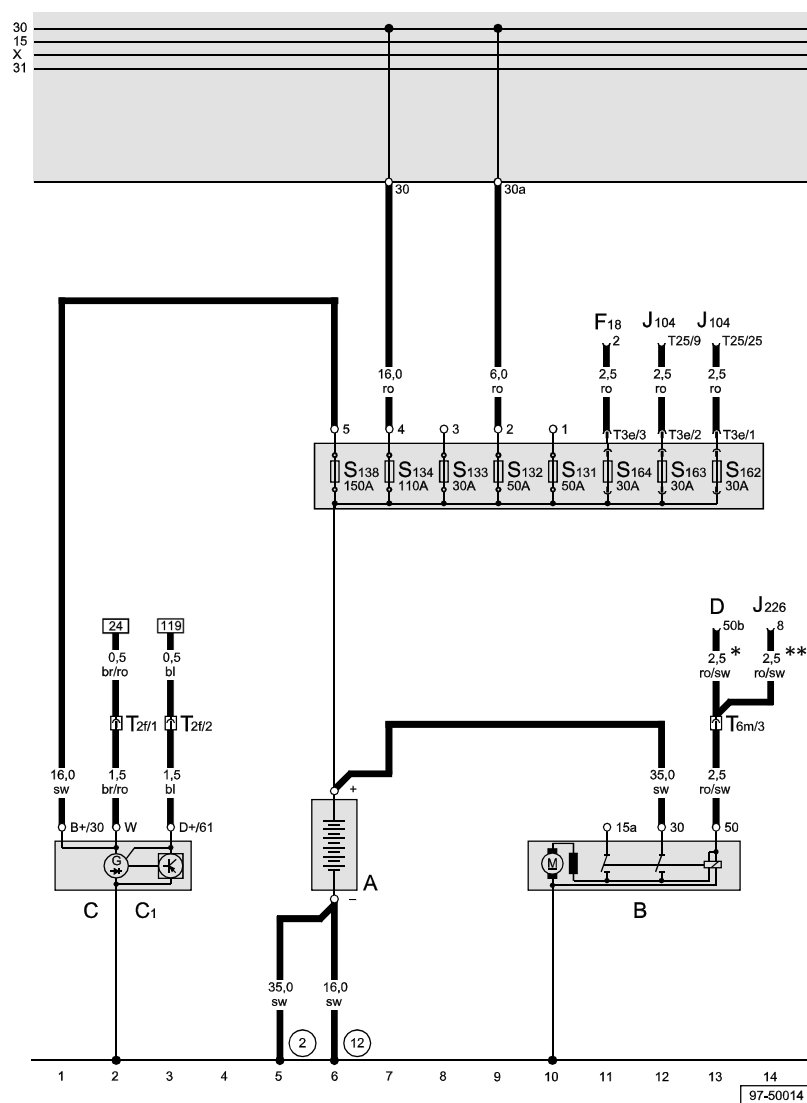
## Position of relays:

- 4 - Fuel pump relay (J17)

## Audi TT

## Current Flow Diagram

No. 2 / 2



ws = white  
 sw = black  
 ro = red  
 rt = red  
 br = brown  
 gn = green  
 bl = blue  
 gr = grey  
 li = purple  
 vi = purple  
 ge = yellow  
 or = orange  
 rs = pink

### Battery, starter, alternator, ignition/starter switch, main fuse box/battery

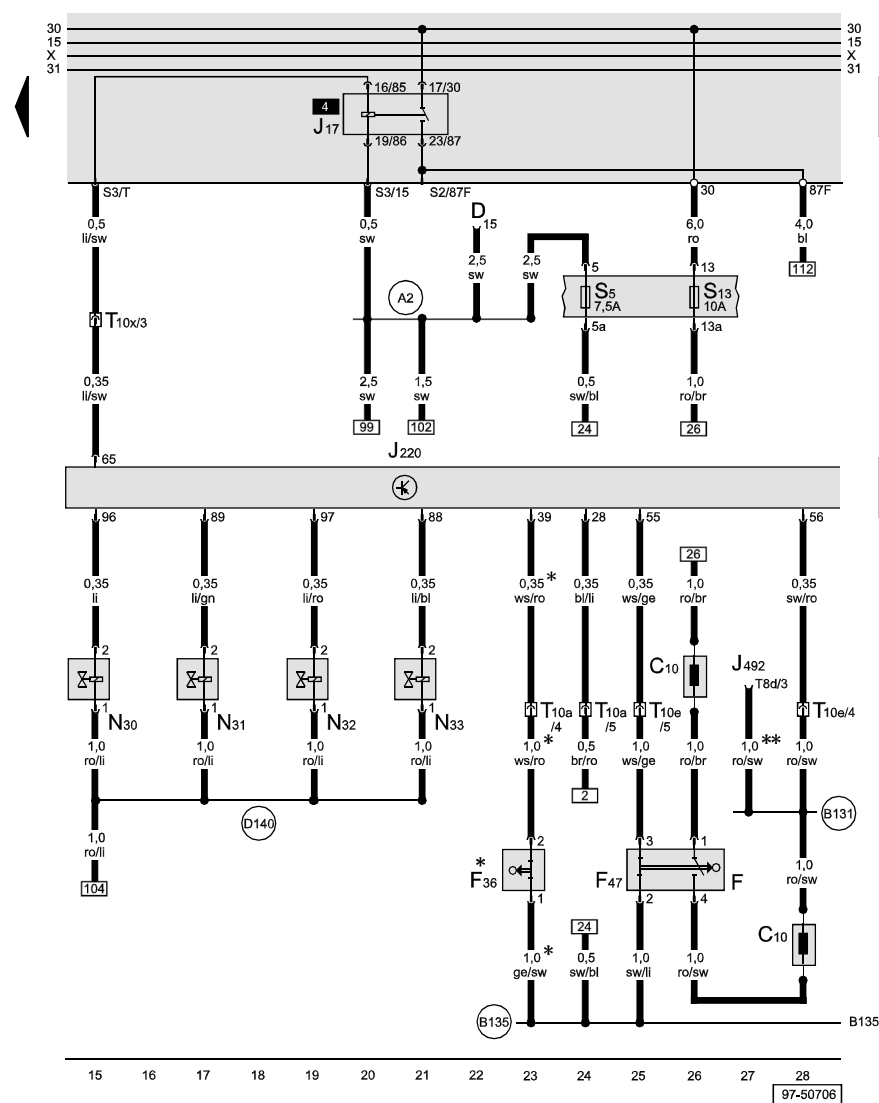
- A - Battery
- B - Starter
- C - Alternator
- C1 - Voltage regulator
- D - Ignition/starter switch
- F18 - Radiator fan thermo-switch
- J104 - ABS with EDL control unit
- J226 - Starter inhibitor and reversing light relay
- S131 - Fuse 1
- S132 - Fuse 2
- S133 - Fuse 3
- S134 - Fuse 4
- S138 - Fuse 5
- S162 - Fuse -1- (30), in battery fuse box
- S163 - Fuse -2- (30), in battery fuse box
- S164 - Fuse -3- (30), in battery fuse box
- T2f - 2-pin connector, cable channel, in engine compartment, left
- T3e - 3-pin connector, black, on main fuse box/battery
- T6m - 6-pin connector, brown, in plenum chamber
- T25 - 25-pin connector, on ABS control unit
- 2 - Earth strap, gearbox - body
- 12 - Earth point, in engine compartment, left
- \* - Only models with manual gearbox
- \*\* - Only models with automatic gearbox

97-50014

## Audi TT

## Current Flow Diagram

No. 2 / 3


**Motronic control unit, fuel pump relay, injectors, brake light switch, clutch pedal switch**

- C10 - Suppression filter
- D - Ignition/starter switch
- F - Brake light switch
- F36 - Clutch pedal switch
- F47 - Cruise control system brake pedal switch
- J17 - Fuel pump relay
- J220 - Motronic control unit
- J492 - Four-wheel drive control unit
- N30 - Injector, cylinder 1
- N31 - Injector, cylinder 2
- N32 - Injector, cylinder 3
- N33 - Injector, cylinder 4
- S5 - Fuse in fuse box
- S13 - Fuse in fuse box
- T8d - 8-pin connector, on four-wheel drive control unit
- T10a - 10-pin connector, green, in plenum chamber
- T10e - 10-pin connector, black, in plenum chamber
- T10x - 10-pin connector, orange, in plenum chamber
- A2 - Positive (+) connection (15), in dash panel wiring harness
- B131 - Connection (54), in interior wiring harness
- B135 - Connection (15a), in interior wiring harness
- D140 - Connection (injectors), in engine prewiring wiring harness
- \* - Models with manual gearbox
- \*\* - Models with quattro four-wheel drive

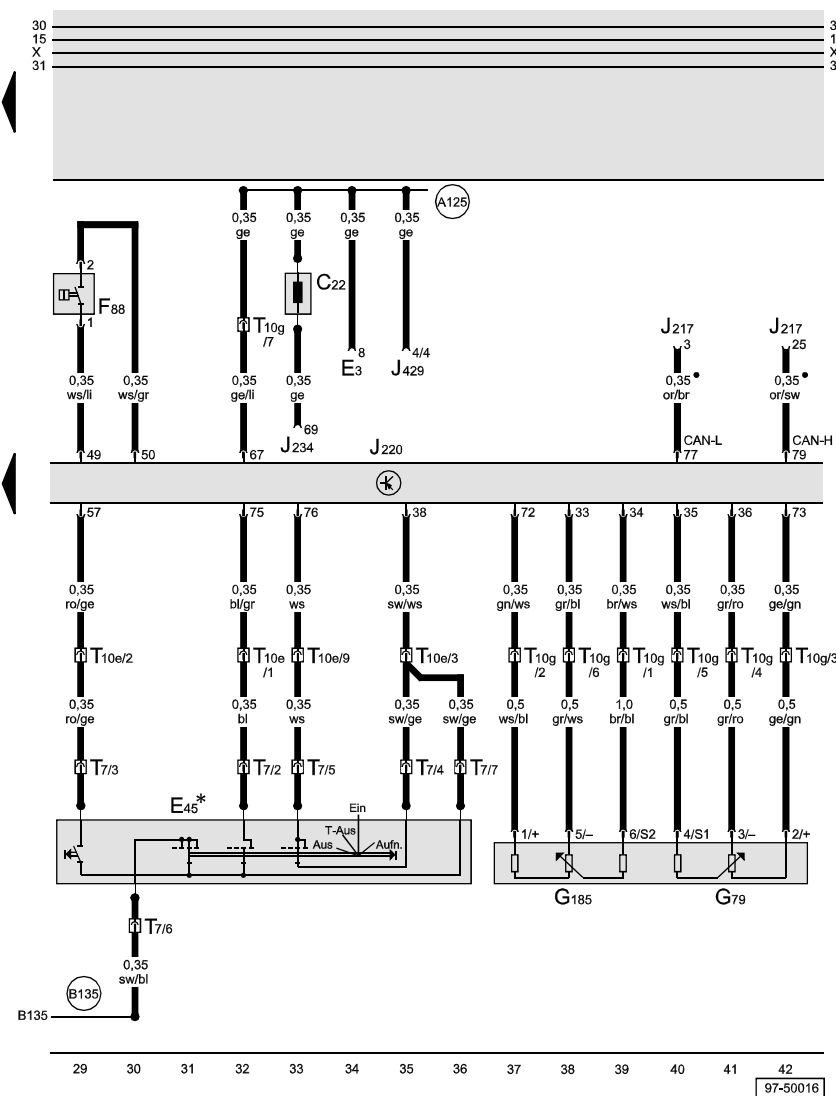
ws = white  
 sw = black  
 rt = red  
 br = brown  
 gn = green  
 bl = blue  
 gr = grey  
 li = purple  
 vi = purple  
 ge = yellow  
 or = orange  
 rs = pink

97-50706

## Audi TT

## Current Flow Diagram

No. 2 / 4



ws = white  
 sw = black  
 ro = red  
 rt = red  
 br = brown  
 gn = green  
 bl = blue  
 gr = grey  
 li = purple  
 vi = purple  
 ge = yellow  
 or = orange  
 rs = pink

**Motronic control unit, power assisted steering pressure switch, cruise control system, accelerator pedal position senders**

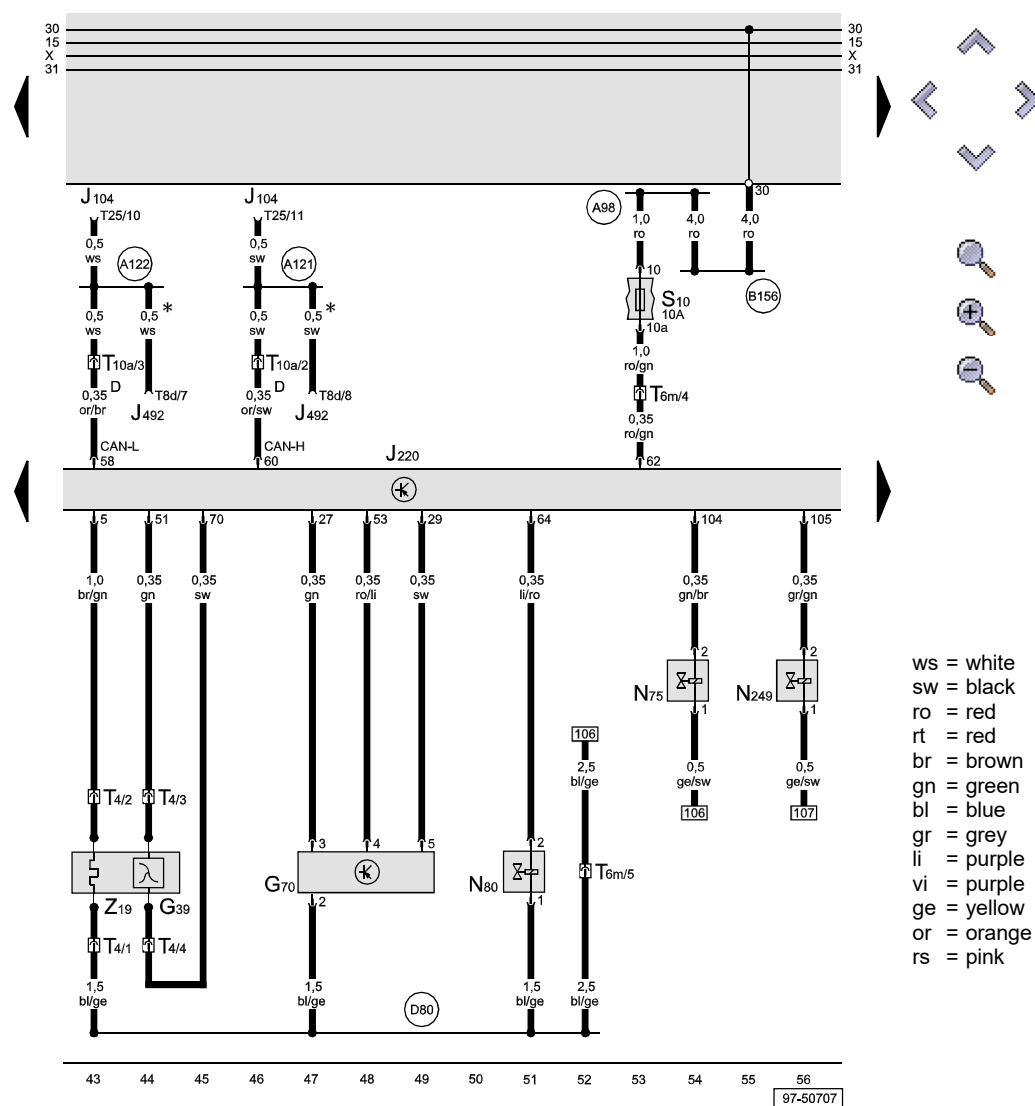
- C22 - Interference suppression choke for airbag
- E3 - Hazard warning light switch
- E45 - Cruise control system switch
- F88 - Power assisted steering pressure switch
- G79 - Accelerator pedal position sender
- G185 - Accelerator pedal position sender -2-
- J217 - Automatic gearbox control unit
- J220 - Motronic control unit
- J234 - Airbag control unit
- J429 - Central locking control unit
- T7 - 7-pin connector, behind steering column switch trim
- T10e - 10-pin connector, black, in plenum chamber
- T10g - 10-pin connector, blue, in plenum chamber
- 85 - Earth connection -1-, in engine compartment wiring harness
- A125 - Connection (crash signal), in dash panel wiring harness
- B135 - Connection (15a), in interior wiring harness
- - CAN bus (data wire)
- \* - Models with cruise control system

97-50016

## Audi TT

## Current Flow Diagram

No. 2 / 5

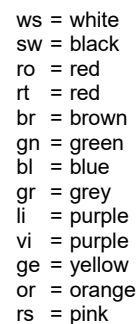


**Motronic control unit, lambda probe, air mass meter, activated charcoal filter system solenoid valve, charge pressure control solenoid valve, turbocharger divert air valve**

- G39 - Lambda probe
- G70 - Air mass meter
- J104 - ABS with EDL control unit
- J220 - Motronic control unit
- J492 - Four-wheel drive control unit
- N75 - Charge pressure control solenoid valve
- N80 - Activated charcoal filter system solenoid valve I (pulsed)
- N249 - Turbocharger divert air valve
- S10 - Fuse in fuse box
- T4 - 4-pin connector, in engine compartment, right
- T6m - 6-pin connector, brown, in plenum chamber
- T8d - 8-pin connector, on four-wheel drive control unit
- T10a - 10-pin connector, green, in plenum chamber
- T25 - 25-pin connector, on ABS control unit
- Z19 - Lambda probe heater
- A98 - Positive (+) connection -4- (30), in dash panel wiring harness
- A121 - Connection (high bus), in dash panel wiring harness
- A122 - Connection (low bus), in dash panel wiring harness
- B156 - Positive (+) connection -4- (30), in interior wiring harness
- D80 - Positive (+) connection (87a - for active. charcoal filter system solenoid), in engine compartment wiring harness
- - CAN bus (Data bus)
- \* - Only models with quattro four-wheel drive

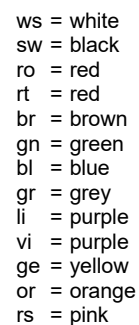
97-50707

No. 2 / 6



- E87 - Control and display unit for air conditioner/Climatronic
- G28 - Engine speed sender
- G61 - Knock sensor 1
- G71 - Intake manifold pressure sender
- G163 - Hall sender 2
- J220 - Motronic control unit
- J293 - Radiator fan control unit
- T3c - 3-pin connector, brown, in engine compartment, left
- T3d - 3-pin connector, grey, in engine compartment, left
- T10p - 10-pin connector, behind dash panel, right
- T10x - 10-pin connector, orange, in plenum chamber
- 220 - Earth connection (sender earth), in engine wiring harness
- A45 - Connection (engine speed signal), in dash panel wiring harness
- D101 - Connection -1-, in engine compartment wiring harness
- D141 - Connection (5V), in engine prewiring wiring harness
- \* - Only models with air conditioner
- \*\* - Only models with manual gearbox
- \*\*\* - Only models with automatic gearbox

## No. 2 / 7

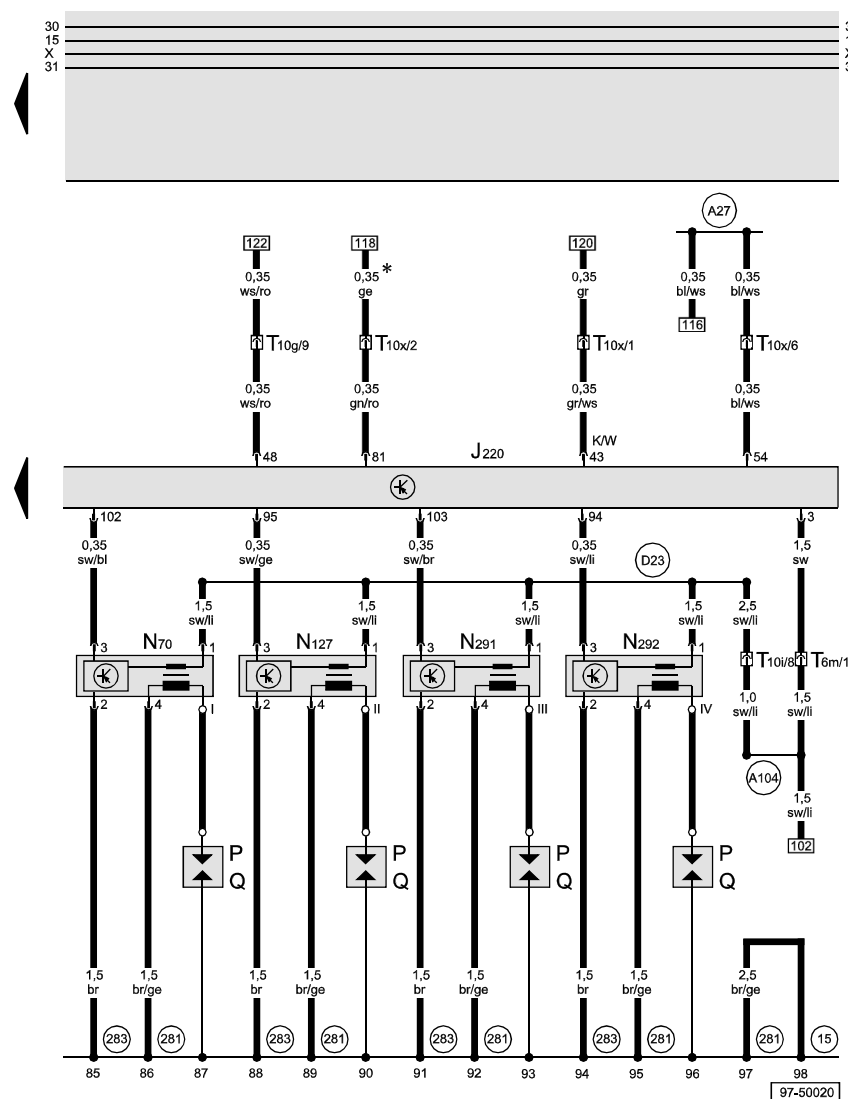


- G2 - Coolant temperature sender
- G42 - Intake air temperature sender
- G62 - Coolant temperature sender
- G66 - Knock sensor 2
- G186 - Throttle valve drive (electric throttle operation)
- G187 - Throttle valve drive angle sender -1- (electric throttle operation)
- G188 - Throttle valve drive angle sender -2- (electric throttle operation)
- J220 - Motronic control unit
- J338 - Throttle valve control unit
- T3b - 3-pin connector, black, in engine compartment
- T10i - 10-pin connector, in engine compartment, left
- 85 - Earth connection -1-, in engine compartment wiring harness
- 132 - Earth connection -3-, in engine compartment wiring harness
- 220 - Earth connection (sender earth), in engine wiring harness
- 269 - Earth connection (sender earth) -1-, in dash panel wiring harness
- D101 - Connection -1-, in engine compartment wiring harness
- \* - Changes inclusive

## Audi TT

## Current Flow Diagram

No. 2 / 8

**Motronic control unit, ignition coils**

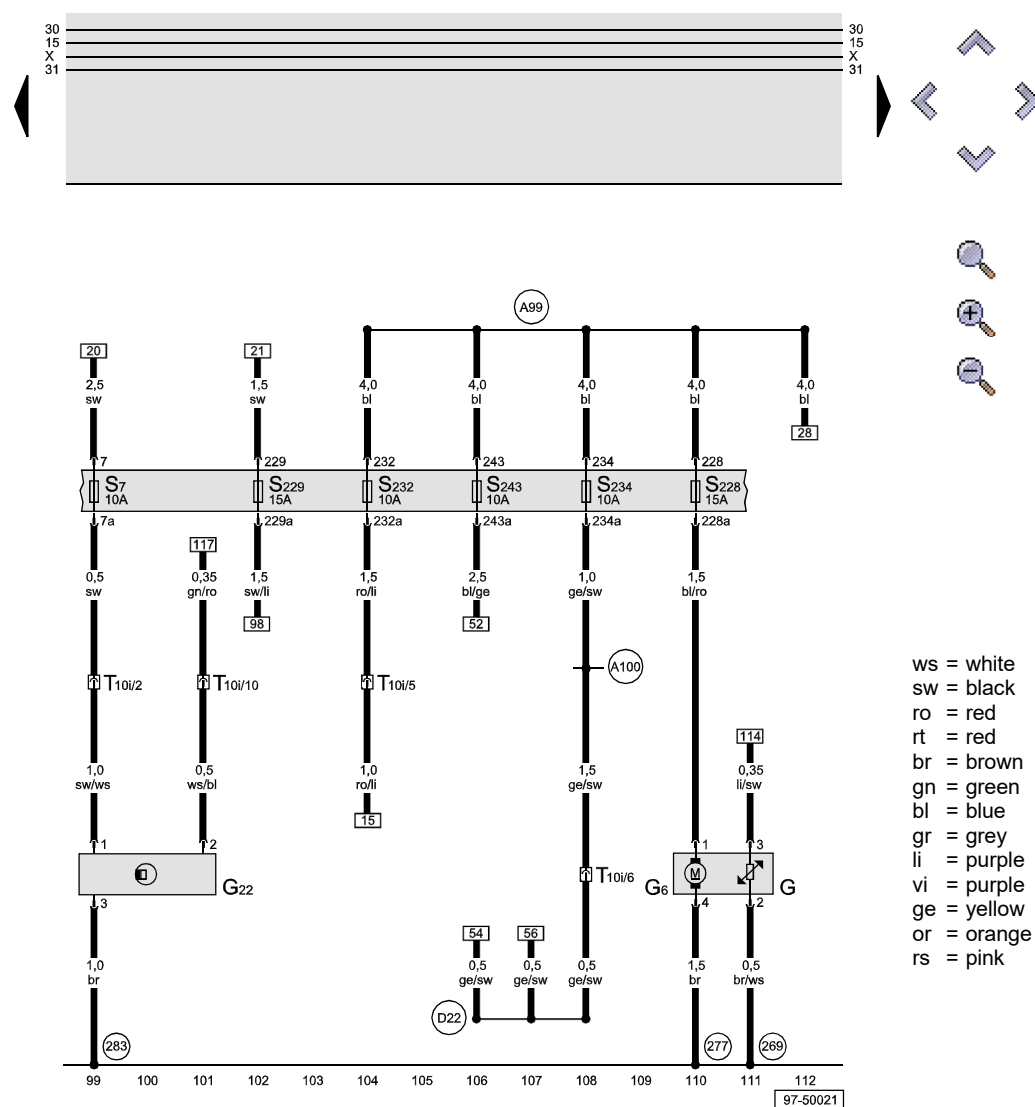
- J220 - Motronic control unit
- N70 - Ignition coil 1 with output stage
- N127 - Ignition coil 2 with output stage
- N291 - Ignition coil 3 with output stage
- N292 - Ignition coil 4 with output stage
- P - Spark plug connector
- Q - Spark plug
- T6m - 6-pin connector, brown, in plenum chamber
- T10g - 10-pin connector, blue, in plenum chamber
- T10i - 10-pin connector, in engine compartment, left
- T10x - 10-pin connector, orange, in plenum chamber
- 15 - Earth point, on cylinder head
- 281 - Earth connection -1-, in engine prewiring wiring harness
- 283 - Earth connection -2-, in engine prewiring wiring harness
- A27 - Connection (speed signal), in dash panel wiring harness, near micro-central electrics
- A104 - Connection -2- (15), in dash panel wiring harness
- D23 - Connection (via fuse 229), in front right wiring harness
- \* - Only models with on-board computer



## Audi TT

## Current Flow Diagram

No. 2 / 9

**Fuses, speedometer sender, fuel gauge sender, fuel pump**

- G - Fuel gauge sender
- G6 - Fuel pump (pre-supply pump)
- G22 - Speedometer sender (Hall sender, on gearbox)
- S7 - Fuse in fuse box
- S228 - Fuse in fuse box
- S229 - Fuse in fuse box
- S232 - Fuse in fuse box
- S234 - Fuse in fuse box
- S243 - Fuse in fuse box
- T10i - 10-pin connector, in engine compartment, left
- 269 - Earth connection (sender earth) -1-, in dash panel wiring harness
- 277 - Earth connection -3-, in interior wiring harness, behind dash panel
- 283 - Earth connection -2-, in engine prewiring wiring harness
- A99 - Connection -1- (87), in dash panel wiring harness
- A100 - Connection -2- (87), in dash panel wiring harness
- D22 - Connection (via fuse 234), in front right wiring harness

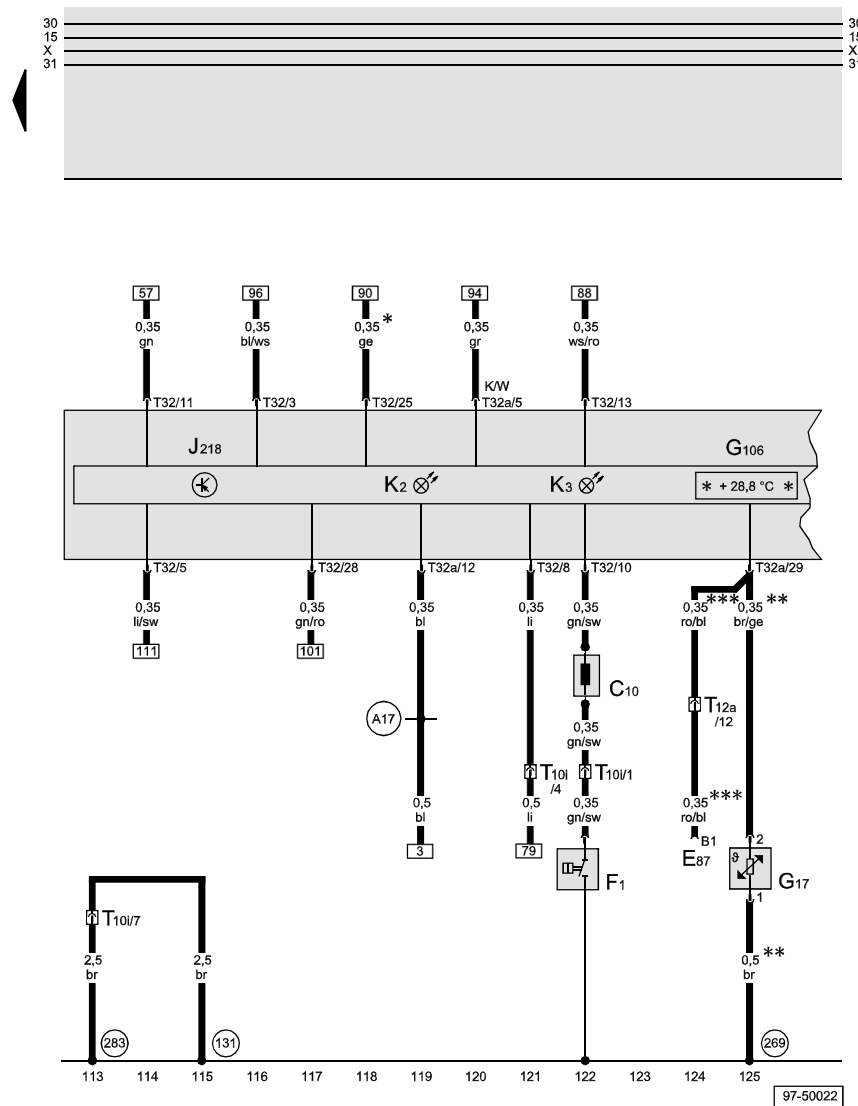
ws = white  
 sw = black  
 ro = red  
 rt = red  
 br = brown  
 gn = green  
 bl = blue  
 gr = grey  
 li = purple  
 vi = purple  
 ge = yellow  
 or = orange  
 rs = pink

97-50021

## Audi TT

## Current Flow Diagram

No. 2 / 10



ws = white  
sw = black  
ro = red  
rt = red  
br = brown  
gn = green  
bl = blue  
gr = grey  
li = purple  
vi = purple  
ge = yellow  
or = orange  
rs = pink

## Dash panel insert, oil pressure switch, ambient temperature sensor

- C10 - Suppression filter
- E87 - Control and display unit for air conditioner
- F1 - Oil pressure switch
- G17 - Ambient temperature sensor
- G106 - Ambient temperature indicator
- J218 - Combi-processor in dash panel insert
- K2 - Alternator warning lamp
- K3 - Oil pressure warning lamp
- T10i - 10-pin connector, in engine compartment, left
- T12a - 12-pin connector, behind dash panel, right
- T32 - 32-pin connector, blue, on dash panel insert
- T32a - 32-pin connector, green, on dash panel insert
- 131 - Earth connection -2-, in engine compartment wiring harness
- 269 - Earth connection (sender earth) -1-, in dash panel wiring harness
- 283 - Earth connection -2-, in engine prewiring wiring harness
- A17 - Connection (61), in dash panel wiring harness
- \* - Models with on-board computer
- \*\* - Models without air conditioner
- \*\*\* - Models with air conditioner, see Current Flow Diagram: Air conditioner